

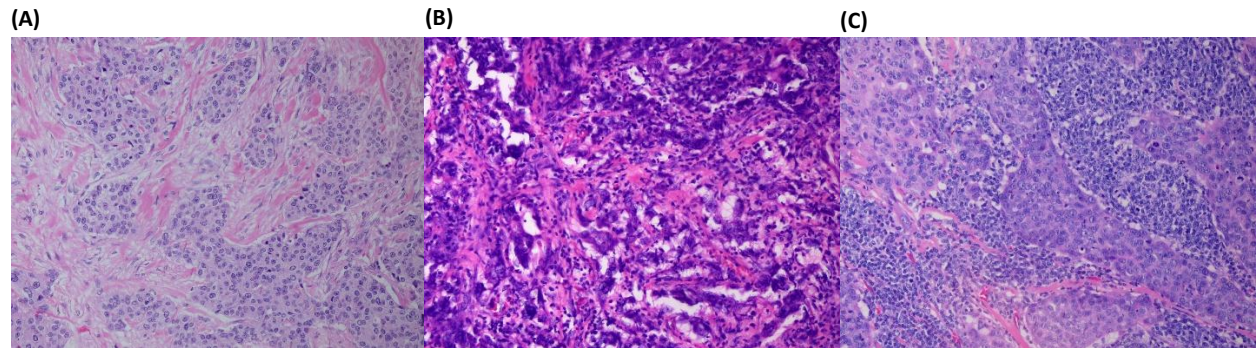
**Supplementary Data**  
**THE PROGNOSTIC SIGNIFICANCE OF TUMOR-INFILTRATING LYMPHOCYTES IN RESECTABLE TRIPLE-NEGATIVE BREAST CANCER—INSIGHTS FROM SEVEN YEARS OF REAL-WORLD DATA**

**Table S1.** Exploratory analysis of relapse-free survival (RFS) in subgroup stratified by TILs  $\geq 30\%$ ,  $< 30\%$

Characteristic (n)	Hazard Ratio	95% Confidence Interval	p-value
<b>Age</b>			
<65 (68)	0.36	0.08-1.68	0.20
$\geq 65$ (60)	0.74	0.20-2.74	0.65
<b>Menopausal status</b>			
Pre-menopause (54)	0.35	0.08-1.63	0.18
Post-menopause (74)	0.71	0.19-2.61	0.60
<b>Comorbidities</b>			
Yes (41)	1.61	0.40-6.46	0.51
No (87)	0.15	0.02-1.12	0.06
<b>ECOG Performance Status</b>			
0 (109)	0.55	0.20-1.51	0.25
<b>Stage</b>			
II (75)	0.55	0.15-2.02	0.37
III (15)	0.51	0.09-2.78	0.44
<b>Lymph node</b>			
Positive (37)	0.83	0.20-3.49	0.80
Negative (91)	0.32	0.07-1.44	0.14
<b>Grade</b>			
3 (92)	0.33	0.09-1.16	0.08
<b>LVI</b>			
Positive (49)	0.67	0.14-3.24	0.62
Negative (79)	0.45	0.12-1.60	0.22
<b>Adjuvant CMT</b>			
Yes (108)	0.56	0.20-1.55	0.27
<b>Adjuvant RT</b>			
Yes (59)	0.52	0.11-2.49	0.41
No (69)	0.53	0.15-1.88	0.32
<b>Overall population (128)</b>			
	0.54	0.20-1.49	0.24

**Abbreviations:** TILs, tumor-infiltrating lymphocytes; ECOG, Eastern cooperative oncology group; LVI, lymphovascular invasion; CMT, chemotherapy; RT, radiotherapy

**Figure S1.** TIL levels and pathological analysis



Representative image of stromal tumor-infiltrating lymphocytes evaluation on H&E-stained slide at 20X magnification. TILs were assessed according to the International TILs Working Group 2014 guideline.

**(A)** TILs 0–10%: minimal lymphocytic infiltration.

**(B)** TILs 20–<30%: moderate stromal infiltration.

**(C)** TILs  $\geq$  30%: extensive lymphocytic presence in the stromal compartment surrounding tumor cells.

Images courtesy of Dr. Manchuphorn Chirachakhrut, Department of Pathology, Ramathibodi Hospital.

**Abbreviations:** TILs, tumor-infiltrating lymphocytes; H&E, hematoxylin and eosin.